

Rack-Mount Control Panels

19-inch rack-mount panels in 1HU and 3HU layouts

CP12 Series

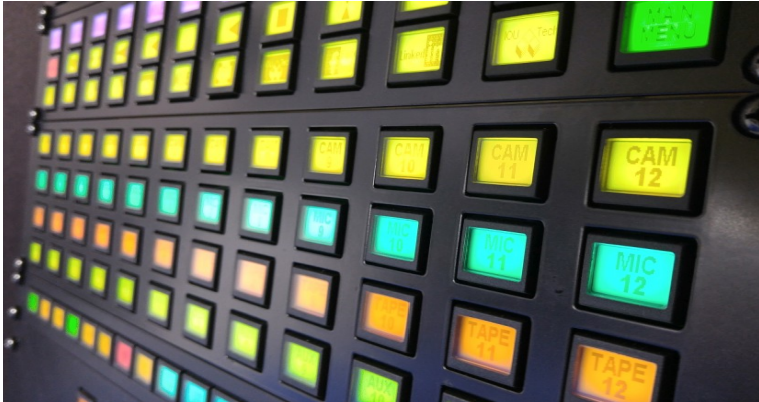
19-inch Rack-Mount Control Panels with Sx6432 switches

and RS232 and USB interfaces (Ethernet optional)

TABLE OF CONTENTS

- General Description.....3**
 - CP1201 with 12 SB6432 in 1HU frame.....3
 - CP1202 with 24 SB6432 in 2HU frame.....3
 - CP1203 with 36 SB6432 in 2HU frame.....3
 - CP1204 with 48 SB6432 in 3HU frame.....3
- CP12 Series.....4**
 - Key Matrix.....4
 - CC0064.....4
 - Key Select Tables.....4
 - Controller Board.....5
 - Serial Connections.....5
 - Serial-to-Ethernet Option.....5
 - Power.....5
- Notices.....6**
 - Copyright Notice.....6
 - Technical Notice.....6
 - Warranty Disclaimer.....6
- Ordering Information.....7**
- Change History.....7**

GENERAL DESCRIPTION



The CP12 Series is a series of custom control panels with 19-inch rackmount frontpanels integrating Sx6432 keys and CC0064 controller with RS232 and USB2.0 interfaces. Serial-to-Ethernet integration available as an option.

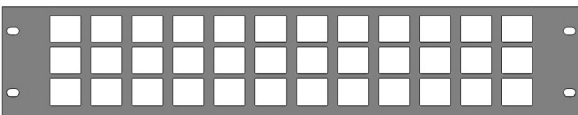
CP1201 with 12 SB6432 in 1HU frame



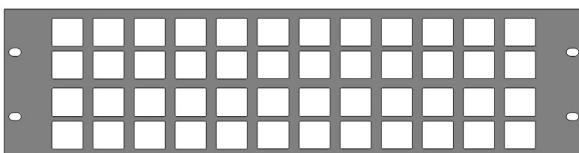
CP1202 with 24 SB6432 in 2HU frame



CP1203 with 36 SB6432 in 2HU frame



CP1204 with 48 SB6432 in 3HU frame



CP12 SERIES

Key Matrix

Aluminum front panel. Mounting stand-off for matrix PCB and controller board on reverse. Mounting access from behind.

Key matrix consisting of 1-4 rows of 12 Sx6432 keys

Aluminum rear housing with cutouts for RS-232 and USB 2.0 (Ethernet optional) connector and power connection.

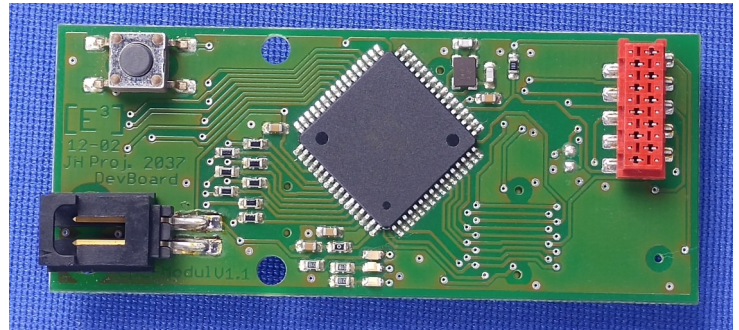
CC0064

Controller board for up to 64 SB6432 keys

RS-232 and USB2.0 interface with heartbeat and key status (press/release)

On-board memory for bitmaps and colors

Power Supply connector



Key Select Tables

1	2	3	4	5	6	7	8	9	10	11	12
---	---	---	---	---	---	---	---	---	----	----	----

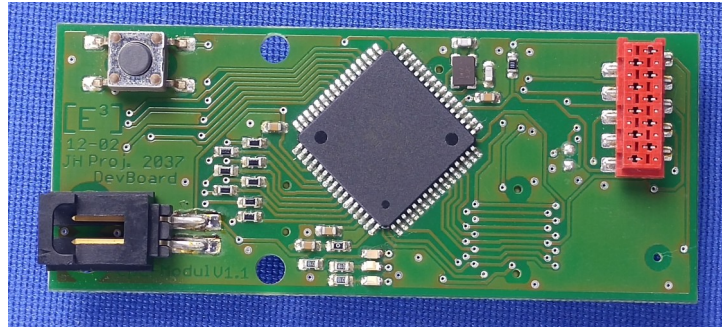
1	2	3	4	5	6	7	8	9	10	11	12
13	14	15	16	17	18	19	20	21	22	23	24

1	2	3	4	5	6	7	8	9	10	11	12
13	14	15	16	17	18	19	20	21	22	23	24
25	26	27	28	29	30	31	32	33	34	35	36

1	2	3	4	5	6	7	8	9	10	11	12
13	14	15	16	17	18	19	20	21	22	23	24
25	26	27	28	29	30	31	32	33	34	35	36
37	38	39	40	41	42	43	44	45	46	47	48

Controller Board

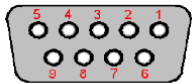
The CP12 series panels are connected to the external control system by RS-232 or USB 2.0 interfaces via the integrated CC0064 controller board. **Please refer to the CC0064-SU handbook for details about the interfacing and command set.**



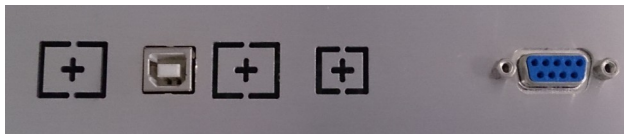
Serial Connections

RS232 9-pin female connector. Only RxD, TxD and Ground are used. All of the other connections are shorted.

The data format is 8-bit, no parity, 2 stop bits.



PIN 2	TxD
PIN 3	RxD
PIN 5	GND



Type B

USB connection via USB Type B connector.

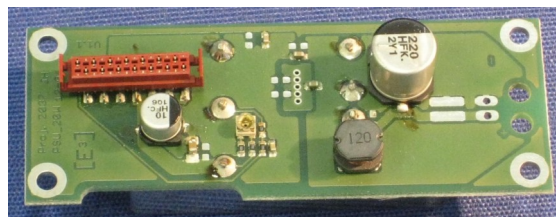
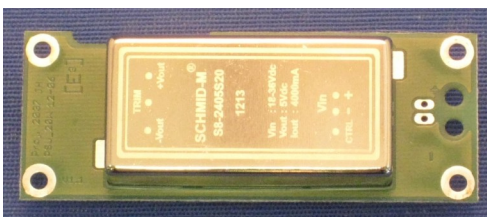
Serial-to-Ethernet Option

All CP12 Series panels are optionally available with a Serial-to-Ethernet adapter

Power

Power is provided via Lumberg SGV30 3-pin connector

- Pin 1 NC
- Pin 2 GND
- Pin 3 VCC



NOTICES

Copyright Notice

© 2008-2022 Copyright [E³] Engstler Elektronik Entwicklung GmbH. All rights reserved.

[E³], *The Third Evolution*[™] and *Legacy Mode*[™] are trademarks of [E³]. *The Keys to Intelligence*[™] is a trademark of I/O Universal Technologies, Inc. used with permission. All other trademarks are property of their respective owners.

No part of this publication may be copied, photocopied, reproduced, translated or reduced to any electronic medium or machine-readable form without the expressed written consent of [E³] Engstler Elektronik Entwicklung GmbH.

Technical Notice

This datasheet is intended for technically qualified personnel trained in the field of electronics.

The knowledge of electronics and the technically correct implementation of the content of this datasheet are required for problem free installation, implementation and safe operation of the described product. Only qualified personnel have the required know-how to implement the specifications given in this data sheet.

For clarity, not all details regarding the product or its implementation, installation, operation, or maintenance have been included. Should you require additional information or further assistance, please contact your local [E³] distributor or [E³] Engstler Elektronik Entwicklung GmbH at techsupport@e3-keys.com. You may also visit our website at www.e3-keys.com.

Warranty Disclaimer

[E³] ENGSTLER ELEKTRONIK ENTWICKLUNG GMBH grants no warranty with respect to this data sheet, neither explicit nor implied, and it is not liable for direct or indirect damages. Some states do not grant the exclusion of incidental or consequential damages and, therefore, this statement may not be valid in such cases.

This data sheet has been produced with all due care. However, since errors cannot be excluded, [E³] Engstler Elektronik Entwicklung GmbH does not grant any warranty or accept any legal responsibility or liability in any form for erroneous statements herein.

ORDERING INFORMATION

Part Number	Description
CP1201-SU	19-inch rack-mount control panel with 12 Sx6432 switches and RS232 and USB interfaces
CP1201-SUE	19-inch rack-mount control panel with 12 Sx6432 switches and RS232, USB and Ethernet interfaces
CP1202-SU	19-inch rack-mount control panel with 24 Sx6432 switches and RS232 and USB interfaces
CP1202-SUE	19-inch rack-mount control panel with 24 Sx6432 switches and RS232, USB and Ethernet interfaces
CP1203-SU	19-inch rack-mount control panel with 36 Sx6432 switches and RS232 and USB interfaces
CP1203-SUE	19-inch rack-mount control panel with 36 Sx6432 switches and RS232, USB and Ethernet interfaces
CP1204SU	19-inch rack-mount control panel with 48 Sx6432 switches and RS232 and USB interfaces
CP1204-SUE	19-inch rack-mount control panel with 48 Sx6432 switches and RS232, USB and Ethernet interfaces

CHANGE HISTORY

Version	Date	Comments
0.1	07/01/08	Initial draft document
0.2	12/05/12	Revised and updated draft document
0.3	12/06/12	Power connector pinout corrected
1.0	12/19/15	Release document
1.1	02/01/17	Command set section removed due to update of CC0064-SU documentation
1.2	07/10/20	New Formatting
2.0	06/08/22	Updated Release Version

[E³] Engstler Elektronik Entwicklung GmbH
Industriering 7 • 63868 Grosswallstadt • Germany
WWW.E3-KEYS.COM